

Latrobe Specialty Steel Company
Aerospace Alloys
Raw Material Surcharges (\$/lb) for July 2009

Structural Alloys

3311	\$0.32
4130 , 4140, 4150	\$0.14
4319, 4320, 4343	\$0.25
4340 VV	\$0.26
4340	\$0.25
4340L	\$0.28
4340L+	\$0.30
8620	\$0.17
9310 VV	\$0.33
9310, 9315	\$0.31
16NCD13	\$0.33
300M	\$0.27
35NCD16	\$0.35
4330+V, 4335+V	\$0.27
A-286	\$1.69
AF1410	\$1.22
D6AC	\$0.25
GNB100	\$0.43
HP-9-4-20	\$0.83
HP-9-4-30	\$0.74
HTC	\$0.16
HY180	\$1.07
HYTUF	\$0.26
L-6305	\$0.19
MarCast	\$1.69
Marvac 250	\$1.89
Marvac 300	\$2.04
Marvac 350	\$2.24
Nitralloy 135	\$0.15
Nitralloy N	\$0.34
UT-18	\$0.24
UT-19	\$0.38

Corrosion (Remelted)

15-5PH	\$0.51
17-4PH	\$0.50
316L	\$1.07
403 SS	\$0.20
422 SS	\$0.33
Jethete	\$0.87
L410Cb	\$0.78
PH13-8Mo	\$0.90
XM-27	\$0.39

Air Melt Stainless

303	\$0.72
304	\$0.71
304HN	\$0.66
309	\$1.34
310	\$1.34
316	\$1.07
321	\$0.77
347	\$0.97
403	\$0.20
405	\$0.19
410	\$0.18
416	\$0.23
418	\$0.24
420	\$0.19
422	\$0.33
431	\$0.36
440	\$0.26
17-4PH	\$0.50
TLS33SS	\$0.36
TLS40SS	\$0.56
TLS50SS	\$1.07
TLS60SS	\$0.67

Bearing Steels

440C	\$0.25
440C AM	\$0.25
440N-DUR	\$0.20
52100	\$0.14
52100T2	\$0.14
Aero-A6	\$0.17
BG-42	\$0.73
CBS 223	\$0.37
CBS 600	\$0.27
CBS50Nil	\$0.90
CSS-42L	\$1.23
Dynaflex	\$0.31
L-6490	\$0.61
Lesco 53	\$0.62
M-50	\$0.68

High Temperature

MP159 Bar	\$6.49
MP35N Bar	\$8.09
MP35N Billet	\$6.47
MP35N Coil	\$8.09
MP35N Tubing	\$16.18
Aerex	\$12.43
LS-A286	\$1.70
LSS-718	\$3.46

Raw Material Surcharges have been historically calculated based upon a 3 month rolling average for each of the raw material components. *However, due to the volatility of raw material costs, Latrobe Specialty Steel Company reserves the right to modify the surcharge calculation based upon current market conditions.*

Refer to the Marketing Department for applicable surcharges for grades not listed.

Mark T. Weberding
Vice President - Marketing & Sales - Latrobe Specialty Steel Company
724-532-6373
mark.weberding@latrobesteel.com

6/29/2009

Latrobe Specialty Steel Company
Conversion Sales
Energy Surcharges (\$/lb) for July 2009

Conversion

Non-Ti Air Cool	\$0.00
Non-Ti Fce Cool	\$0.00
General Ti	\$0.00
Special Processing	\$0.00
Machining Only	\$0.00
Remelt Only	\$0.00

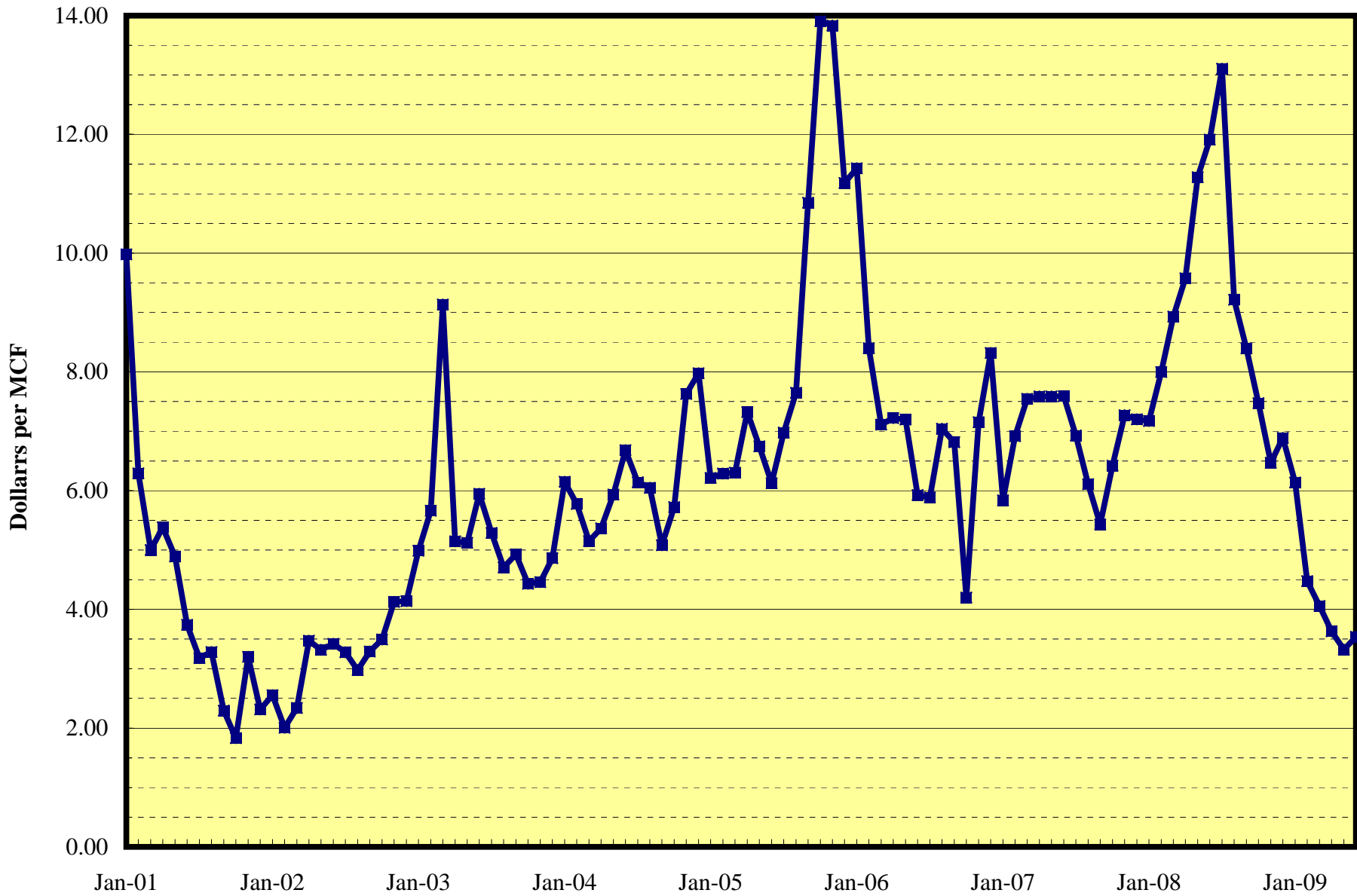
Raw Material Surcharges have been historically calculated based upon a 3 month rolling average for each of the raw material components. *However, due to the volatility of raw material costs, Latrobe Specialty Steel Company reserves the right to modify the surcharge calculation based upon current market conditions.*

Refer to the Marketing Department for applicable surcharges for grades not listed.

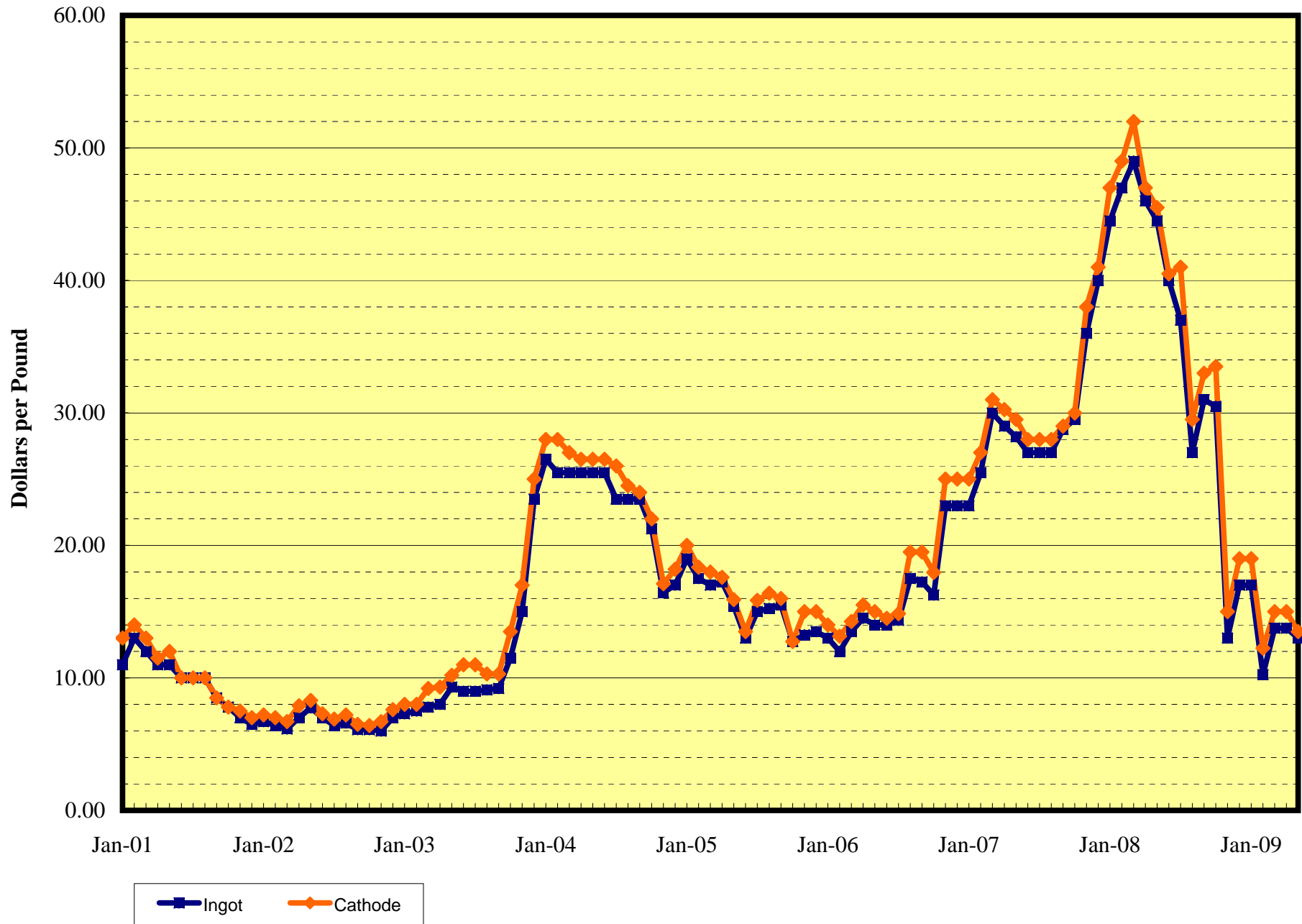
Mark T. Weberding
Vice President - Marketing & Sales - Latrobe Specialty Steel Company
724-532-6373
mark.weberding@latrobesteel.com

6/29/2009

Natural Gas Prices



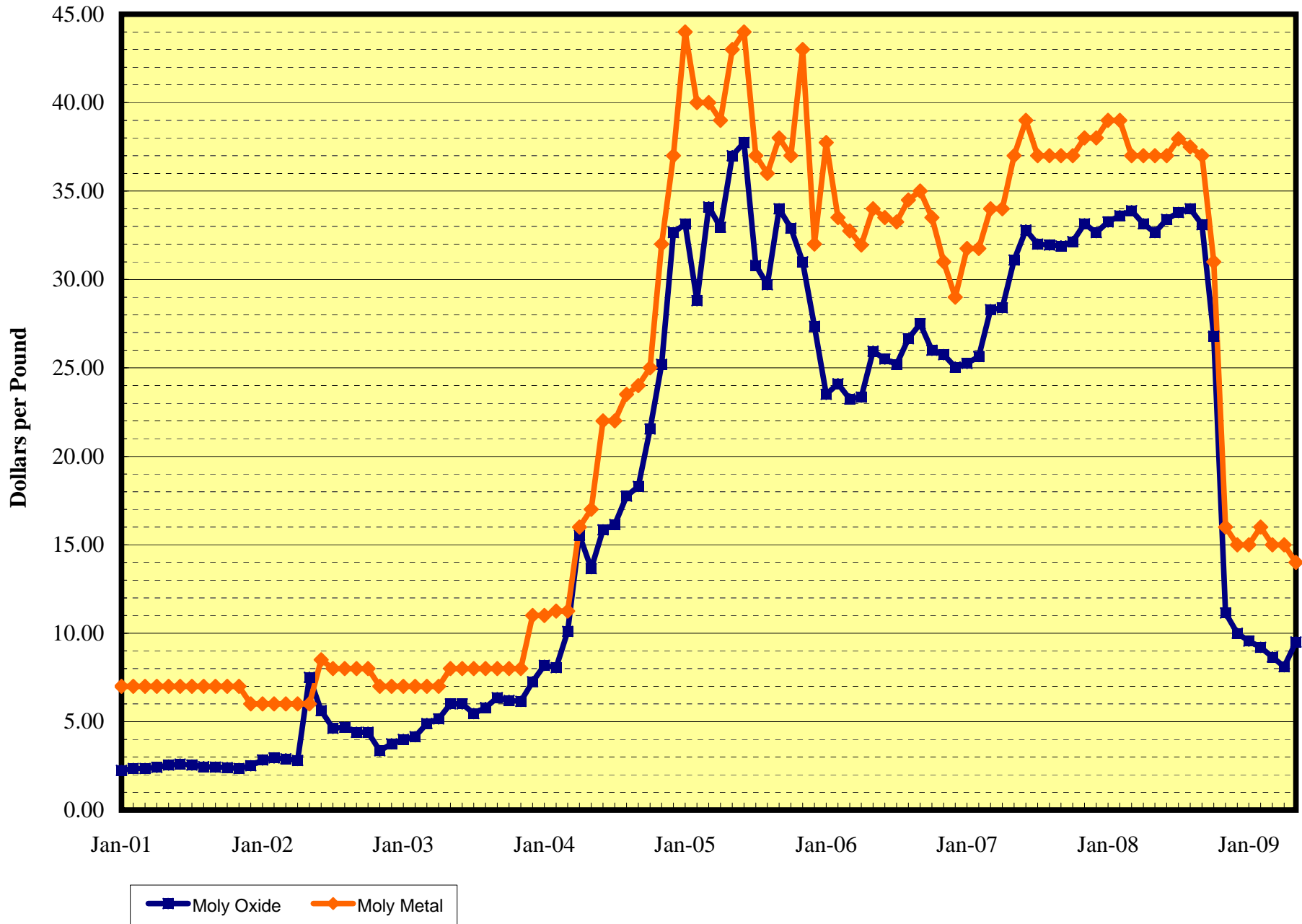
Cobalt Prices



FerroVanadium Prices



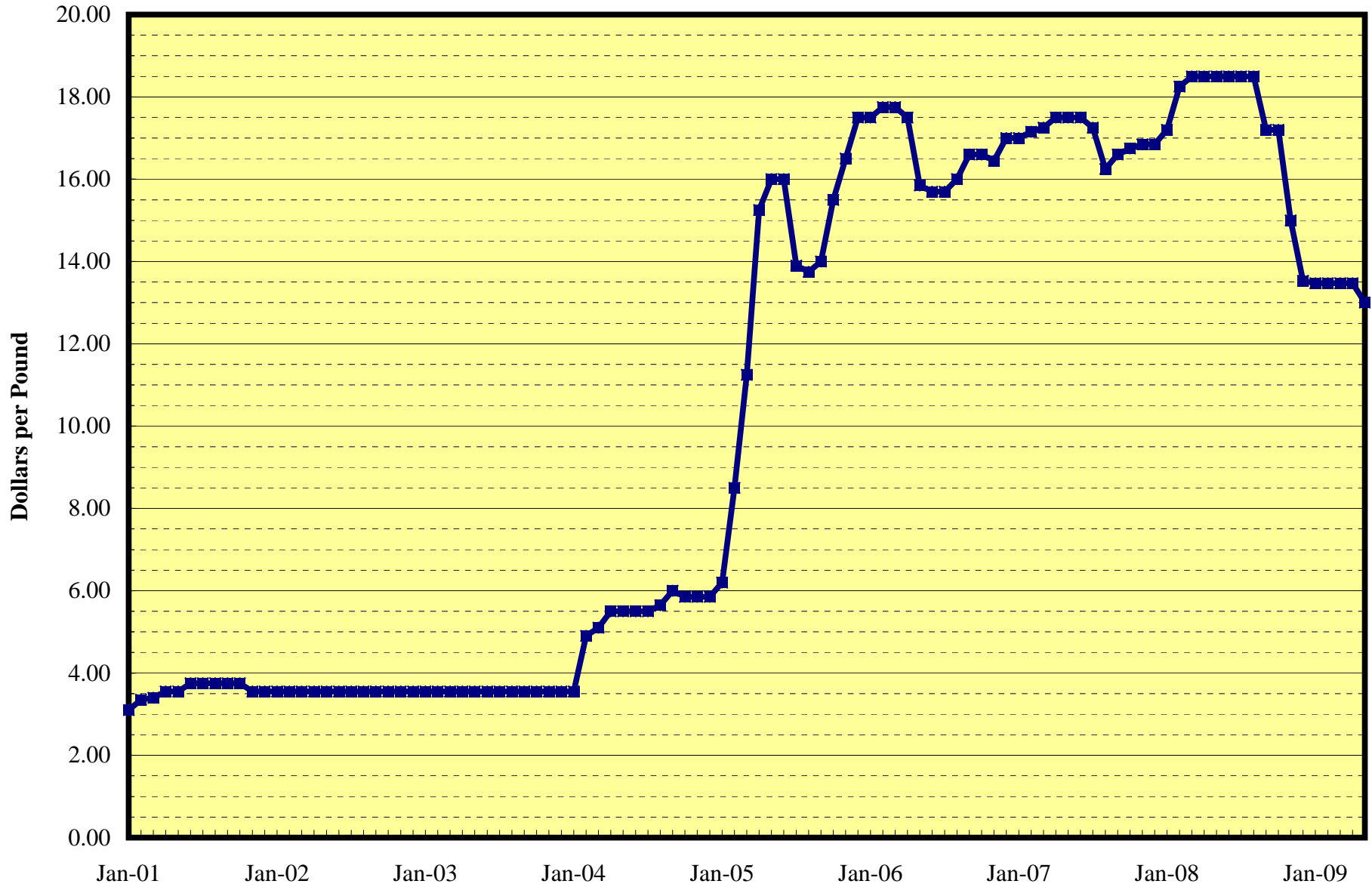
Molybdenum Prices



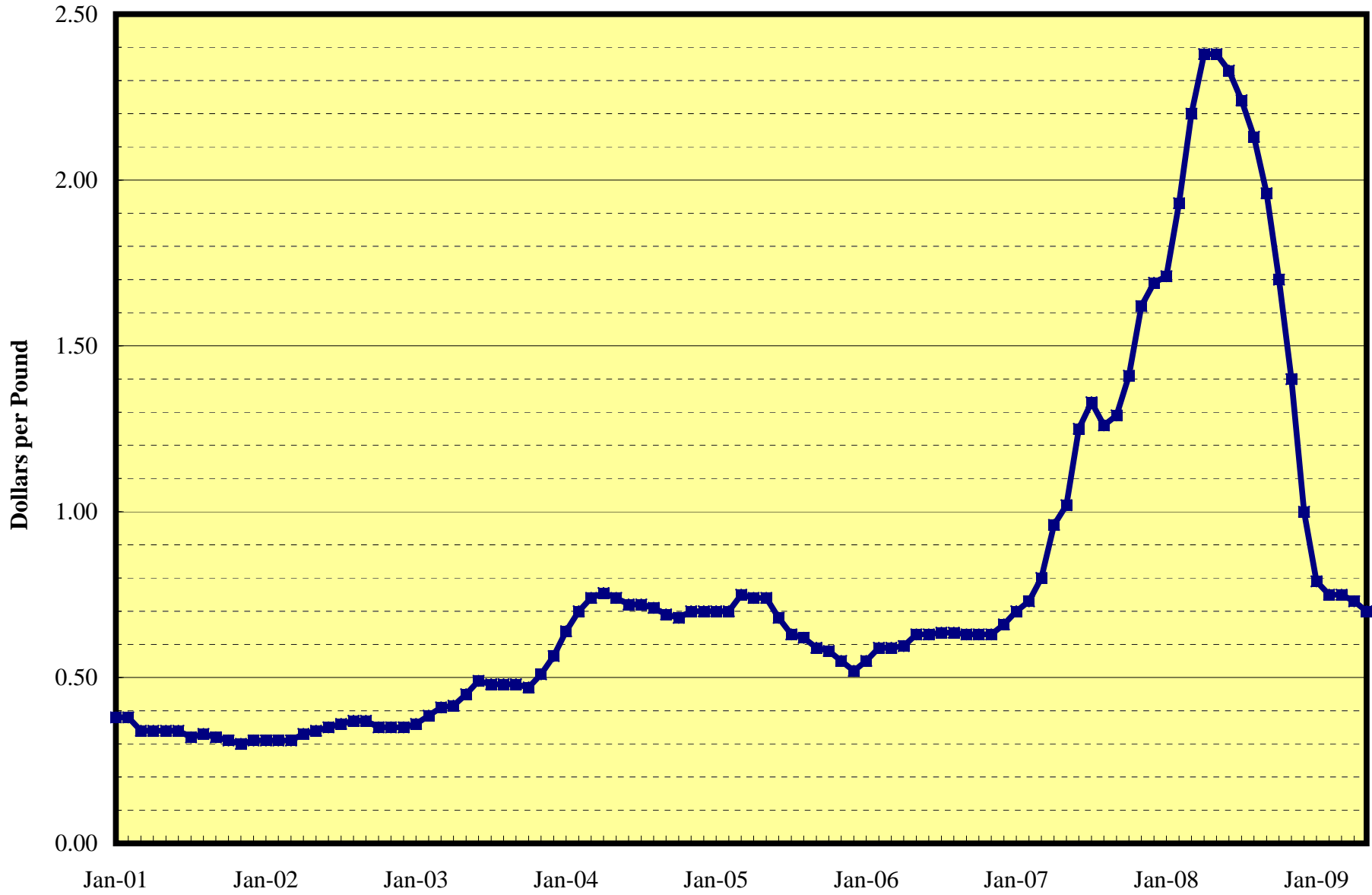
Dealer Nickel Prices



Chinese FerroTungsten Prices



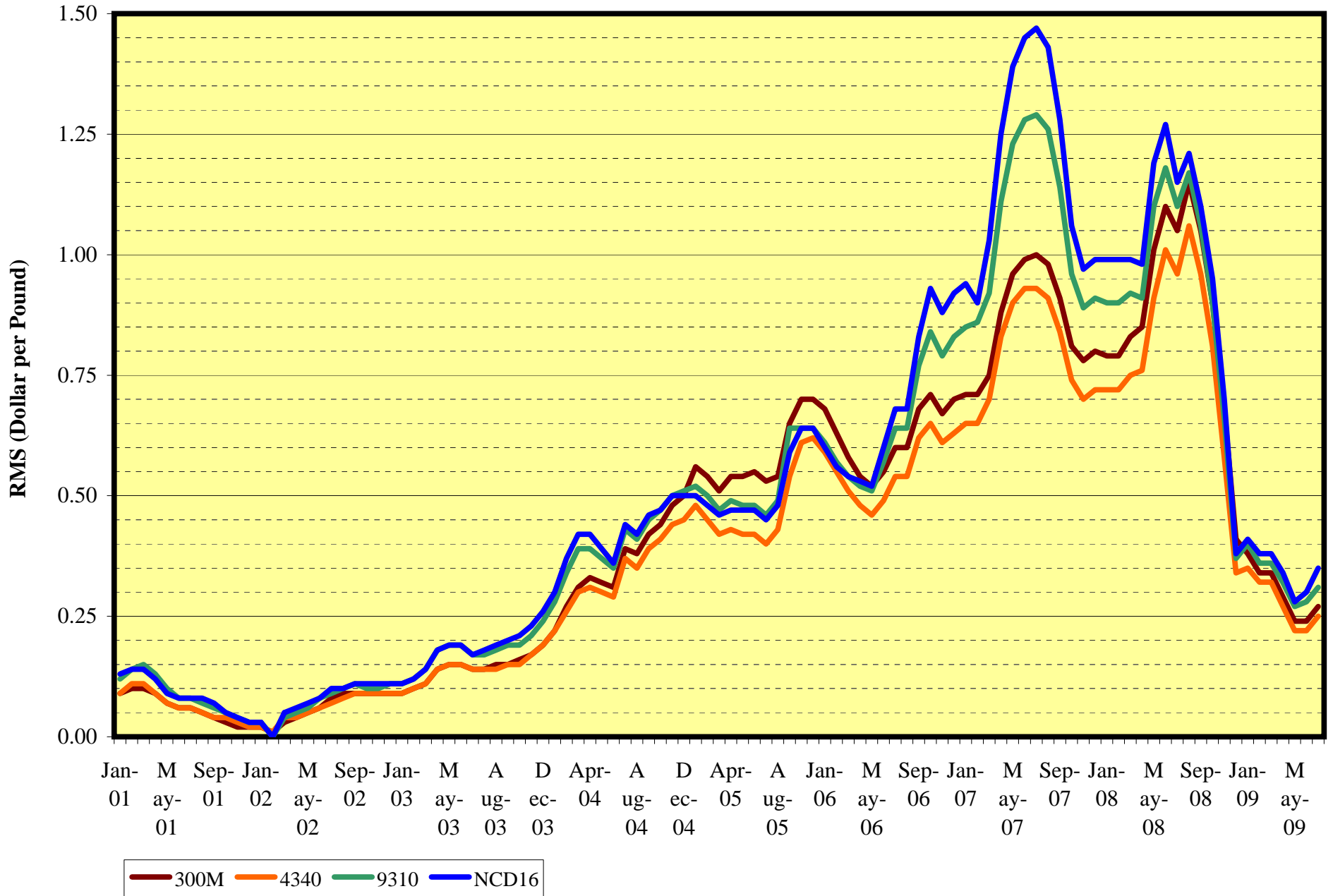
High Carbon FerroChromium Prices



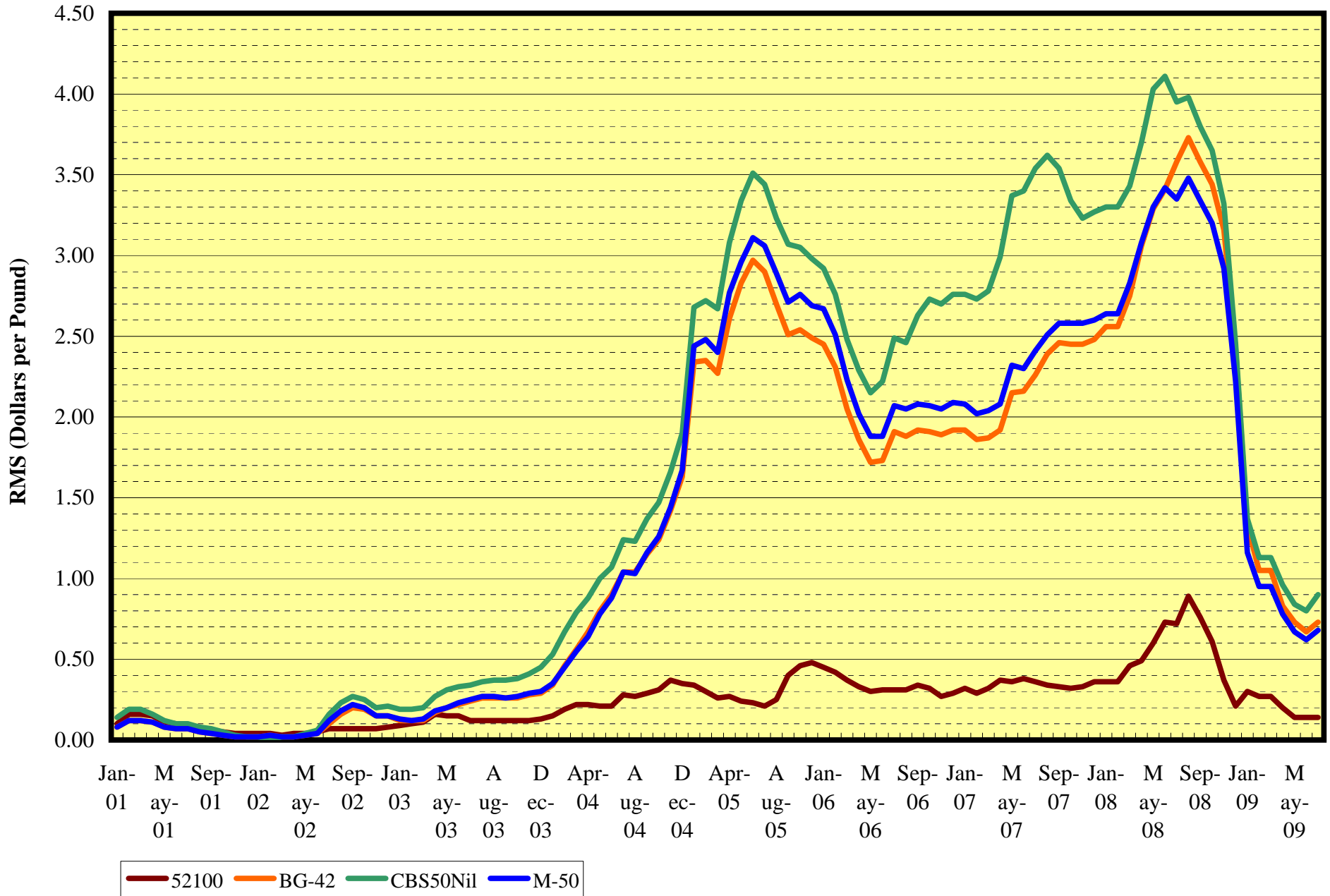
Iron Busheling Prices



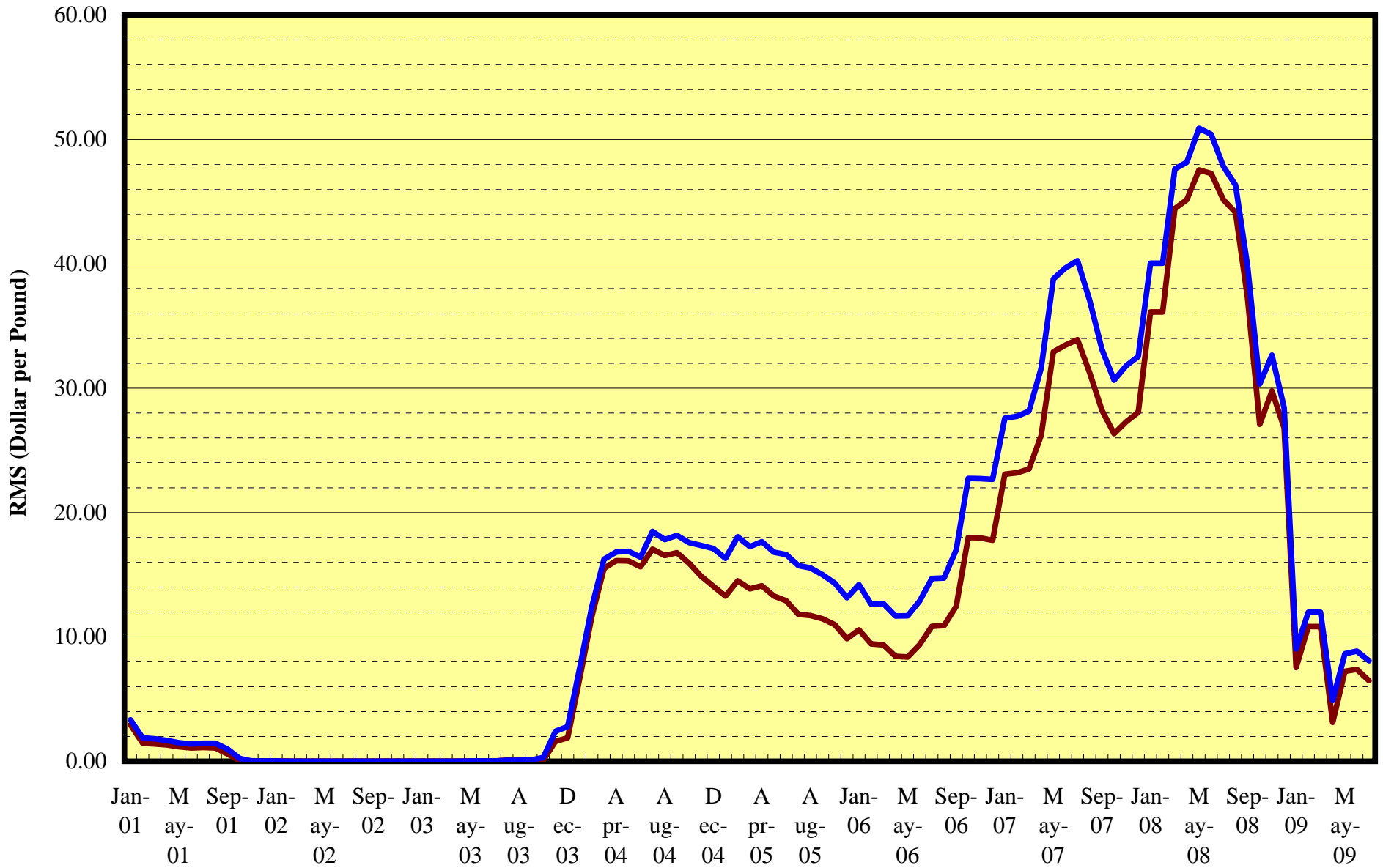
Selective Structural Alloy Surcharges



Selective Bearing Steel Surcharges



Selective High Temperature Alloy Surcharges



— MP159 — MP35N